

Highly weather-resistant powder coating

TIGER Drylac® offers a variety of standard architectural products listed in the chart below.

Color Name	Type	AAMA 2604		AAMA 2605	
		Product #	Gloss	Product #	Gloss
Dark Anodized Bronze	Solid Color	038/60090	25 – 35	075/60091	30 – 40
Medium Bronze	Solid Color	038/60014	20 – 30	075/60088	30 – 40
(Silver) Grey†	Solid Color	038/70049	25 – 35	075/70299	45 – 55
Statuary Bronze	Solid Color	038/60080	25 – 35	075/60090	30 – 40
Taupe	Solid Color	038/70070	25 – 35	075/70307	30 – 40
Sandstone†	Solid Color	038/15012	25 – 35	075/15061	45 – 55
Redwood	Solid Color	038/30041	25 – 35	075/30015	30 – 40
Interstate Blue	Solid Color	038/40025	16 – 25	075/40030	30 – 40
Slate Grey	Solid Color	038/70019	25 – 35	075/70302	30 – 40
Sierra Tan†	Solid Color	038/15002	25 – 35	075/15059	45 – 55
Brick Red	Solid Color	038/30028	16 – 25	075/30010	30 – 40
Boysenberry	Solid Color	038/30033	16 – 25	075/30014	30 – 40
Ivy Green	Solid Color	038/50080	25 – 35	075/50020	30 – 40
Hartford Green	Solid Color	038/50110	25 – 35	075/50025	30 – 40
Aged Copper	Solid Color	038/60006	16 – 25	075/60087	45 – 55
Koko Brown	Solid Color	038/60018	25 – 35	075/60089	30 – 40
Ash Grey	Solid Color	038/70025	25 – 35	075/70303	30 – 40
Military Blue	Solid Color	038/40051	25 – 35	075/40031	30 – 40
Jet Black	Solid Color	038/80020	26 – 35	075/80020	35 – 45
Charcoal Grey	Solid Color	038/70780	25 – 35	075/70312	30 – 40
Medium Bronze Metallic	Metallic	038/60060	Satin	075/68004	Semi Matte
Medium Bronze Anodized	Metallic	061/68002	Satin	075/68009	Semi Matte
Argento 314 Metallic	Metallic	138/90018	Glossy	075/78009	Semi Matte
Champagne 303 Metallic	Metallic	038/15020	Stain	075/15046	Semi Matte
Pearl Dark Grey	Metallic	038/90015	Satin	075/78014	Semi Matte
Anodized Silver	Metallic	138/91021	Semi Gloss	075/90127	Semi Matte

Custom Colors

TIGER Drylac® offers custom color matching* with as little as 88lb/40kg for solid and 396lb/180kg for metallic**.

†Series 75 colors marked with this symbol and those lighter than RAL 7000 in hue may prematurely chalk in extreme conditions due to the limitations of white pigment titanium dioxide.

* Due to the extreme durability requirements, organic pigments as a class cannot be used. This limits the colors to earth tone colors and colors of similar chromaticity in other parts of the spectrum, such as red, blue and green. Evaluations by our laboratory on a case-by-case basis are necessary.

** Metallic colors and effect may vary due to the product chemistry therefore a sample panel should be requested for official color approval. Custom matching is available. Please contact your TIGER Sales Representative for additional details.

The living global TIGER network at your service.



Production facilities

Austria | Canada | China | Mexico | U.S.A. | Vietnam

Affiliated companies and distribution

Europe

Austria | Belarus | Benelux | Bosnia & Herzegovina | Bulgaria | Croatia | Czech Republic | Estonia
France | Germany | Great Britain | Greece | Hungary | Italy | Latvia | Lithuania | Macedonia | Poland
Romania | Serbia & Montenegro | Slovakia | Slovenia | Spain | Switzerland | Turkey | Ukraine

The Americas

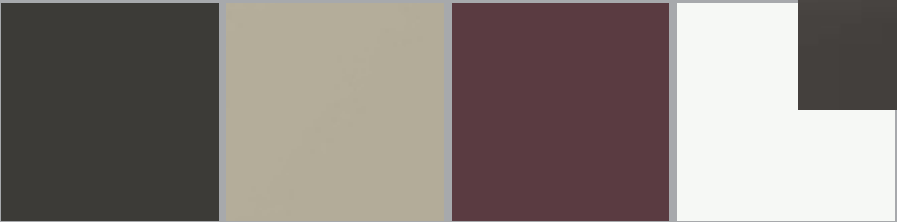
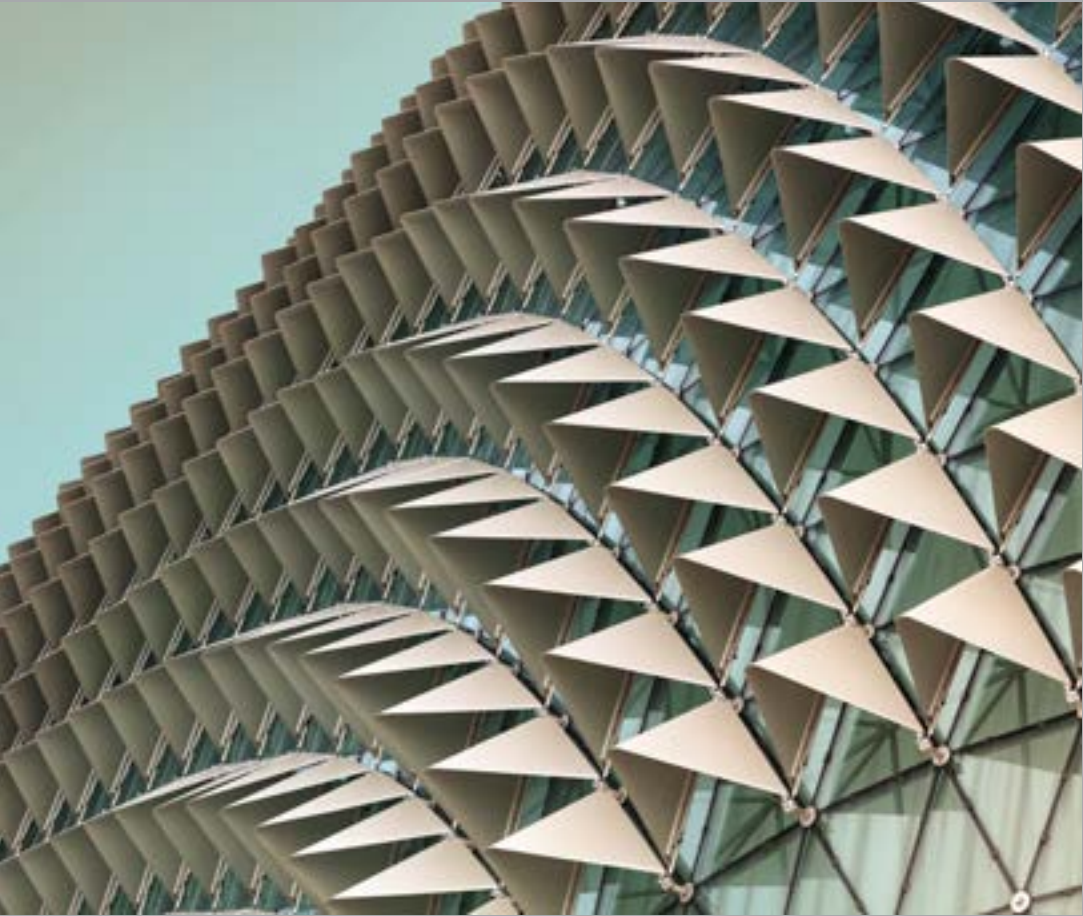
Canada | Mexico | U.S.A.

Asia

China | India | Japan | Taiwan | Vietnam



Drylac®
Powder Coatings



Hyper Durable Powder Coatings for Architectural Aluminum Applications



www.tiger-coatings.com



01-24

Series
75

TIGER Drylac® Architectural Powder Coatings

A unique collections of powder coatings compliant with AAMA specifications for North American manufacturers and designers.

Features

High performance architectural powder coating featuring:

- Superior gloss and color retention
- Outstanding resistance to fading
- Outstanding resistance to chalking
- Good chemical resistance
- Good edge coverage
- Good storage stability

Typical Applications

All Architectural and Construction

Applications including:

- Metal Facades
- Marine Equipment
- Curtain Walls
- Window & Door Frames
- Railings
- Light Poles

TIGER Drylac® Series 75

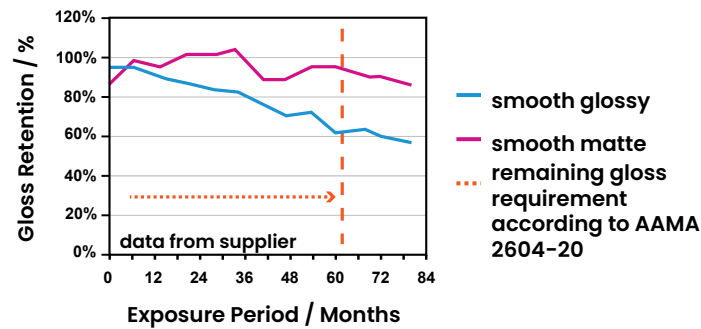
Hyper Durable Powder Coatings for Architectural Aluminum Applications

TIGER Drylac® Series 75 is a Hyper Durable powder coating offering superior weatherability for architectural aluminum applications meeting the performance requirements described within AAMA 2605-201. AAMA 2605 is the highest performance standard for superior performance organic coatings applied to architectural products. Series 75 flouropolymer powder coatings offer an environmentally friendly alternative to liquid coatings, achieving greater than 2.5 mil of dry film in a single application. The resulting finish is a corrosion resistant, mechanically robust, protective coating providing superior resistance to chalking and color fade. Our products within Series 75 are only available to TIGER Drylac® approved applicators for applications with an approved pretreatment on aluminum.

Weather resistance of TIGER Drylac® Architectural Powder Coatings

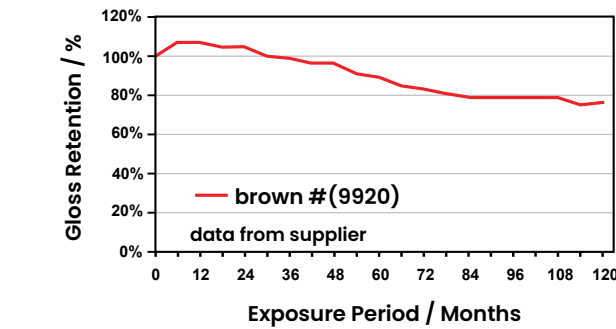
Weather resistance testing according to AAMA 2604

Test conducted in Florida



Weather resistance testing according to AAMA 2605-20

Test conducted in Florida



DIGITAL VERSION: The colors/effects shown here will deviate from the original color/effect due to screen technology.



75/70299
(Silver) Grey
Smooth | 45 - 55



75/70302
Slate Grey
Smooth | Gloss 30 - 40



75/70307
Taupe
Smooth | Gloss 30 - 40



75/70312
Charcoal Grey
Smooth | Gloss 30 - 40



75/40051
Military Blue
Smooth | 30 - 40



75/40030
Interstate Blue
Smooth | 30 - 40



75/30014
Boysenberry
Smooth | 30 - 40



75/80020
Jet Black
Smooth | 35 - 45



75/70303
Ash Grey
Smooth | Gloss 30 - 40



75/15061
Sandstone
Smooth | Gloss 45 - 55



75/15059
Sierra Tan
Smooth | 45 - 55



75/60089
Koko Brown
Smooth | Gloss 30 - 40



75/68004
Medium Bronze Metallic
Metallic Smooth / Semi Matte



75/68009
Medium Bronze Anodized
Metallic Smooth / Semi Matte



75/78009
Argento 314 Metallic
Metallic Smooth / Semi Matte



75/15046
Champagne 303 Metallic
Metallic Smooth / Semi Matte



75/60088
Medium Bronze
Smooth | 30 - 40



75/60090
Statuary Bronze
Smooth | 30 - 40



75/60091
Dark Anodized Bronze
Smooth | 30 - 40



75/30015
Redwood
Smooth | 30 - 40



75/78014
Pearl Dark Grey
Metallic Smooth / Semi Matte



75/90127
Anodized Silver
Metallic Smooth / Semi Matte



75/30010
Brick Red
Smooth | 30 - 40



75/50020
Ivy Green
Smooth | 30 - 40



75/50025
Hartford Green
Smooth | 30 - 40



75/60087
Aged Copper
Smooth | 45 - 55

