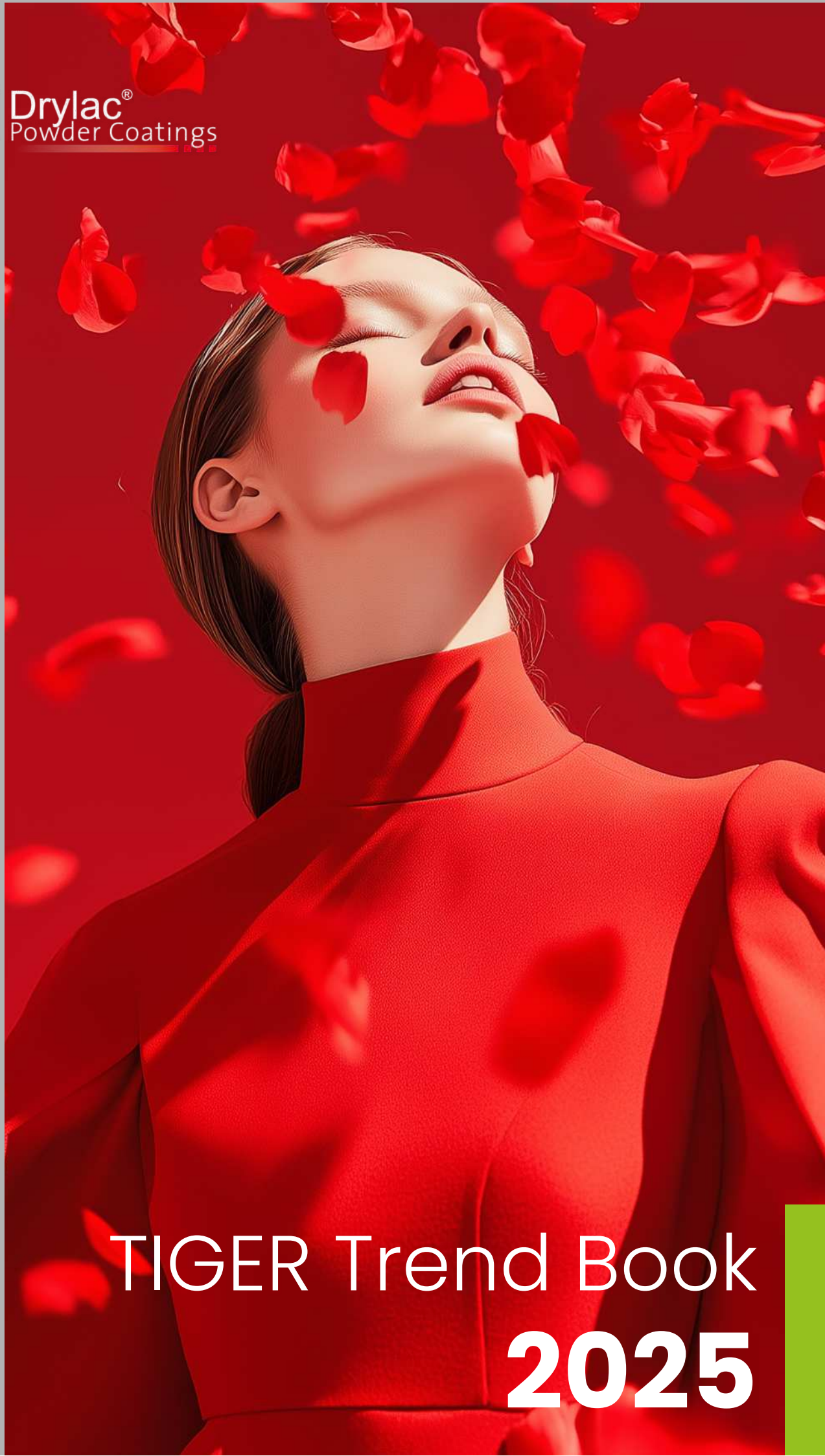




Drylac®
Powder Coatings



TIGER Trend Book **2025**

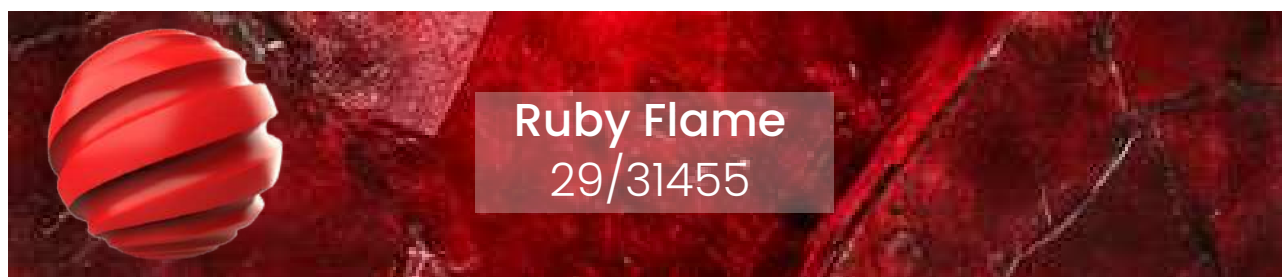
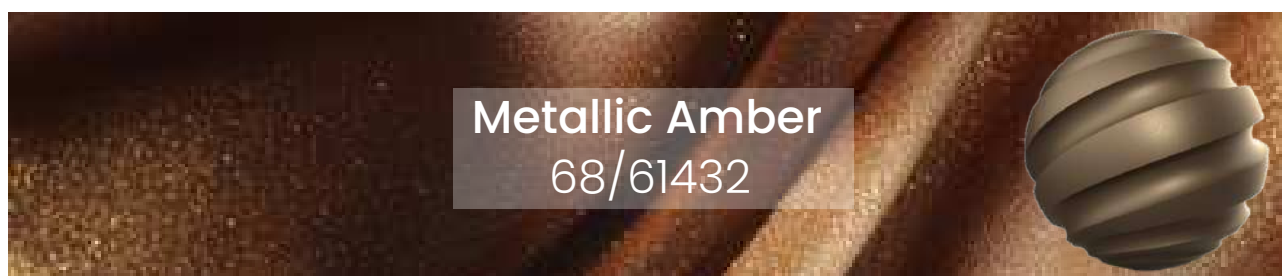
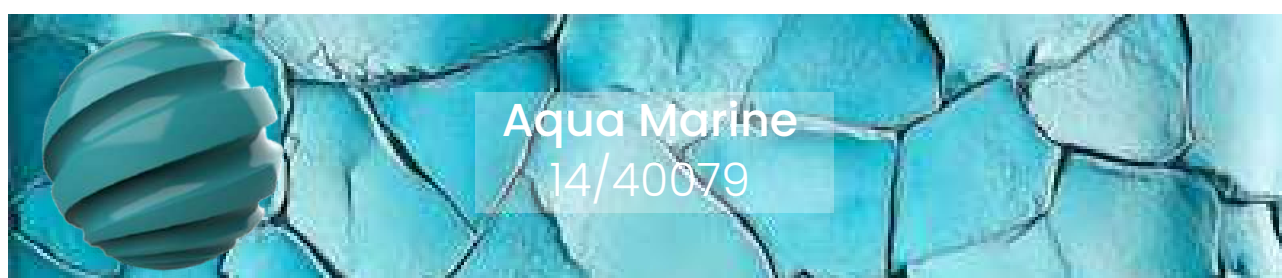
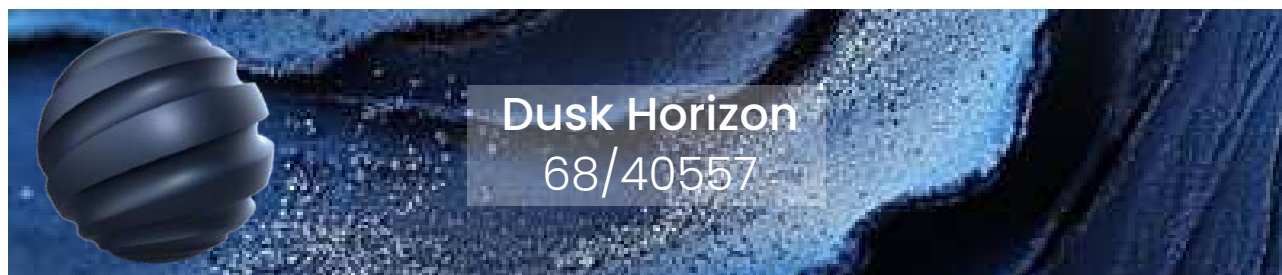


TIGER Trend Colors & Finishes 2025

The unique beauty of colorful gemstones – born from the depths of the mountain, shaped by pressure, and revealed by light. Their radiant color palette symbolizes exclusivity, durability, and an astonishing variety of shades, textures, and levels of brilliance. Each uncut mineral is already of inestimable value and is brought to perfection through professional refinement.

Inspired by the captivating splendor of these natural wonders, TIGER has bridged the gap to powder coating – a technique that transforms everyday objects into unique masterpieces. Discover the elegance and individuality of TIGER Trend Colors & Finishes 2025 and let your surfaces shine like precious gemstones.



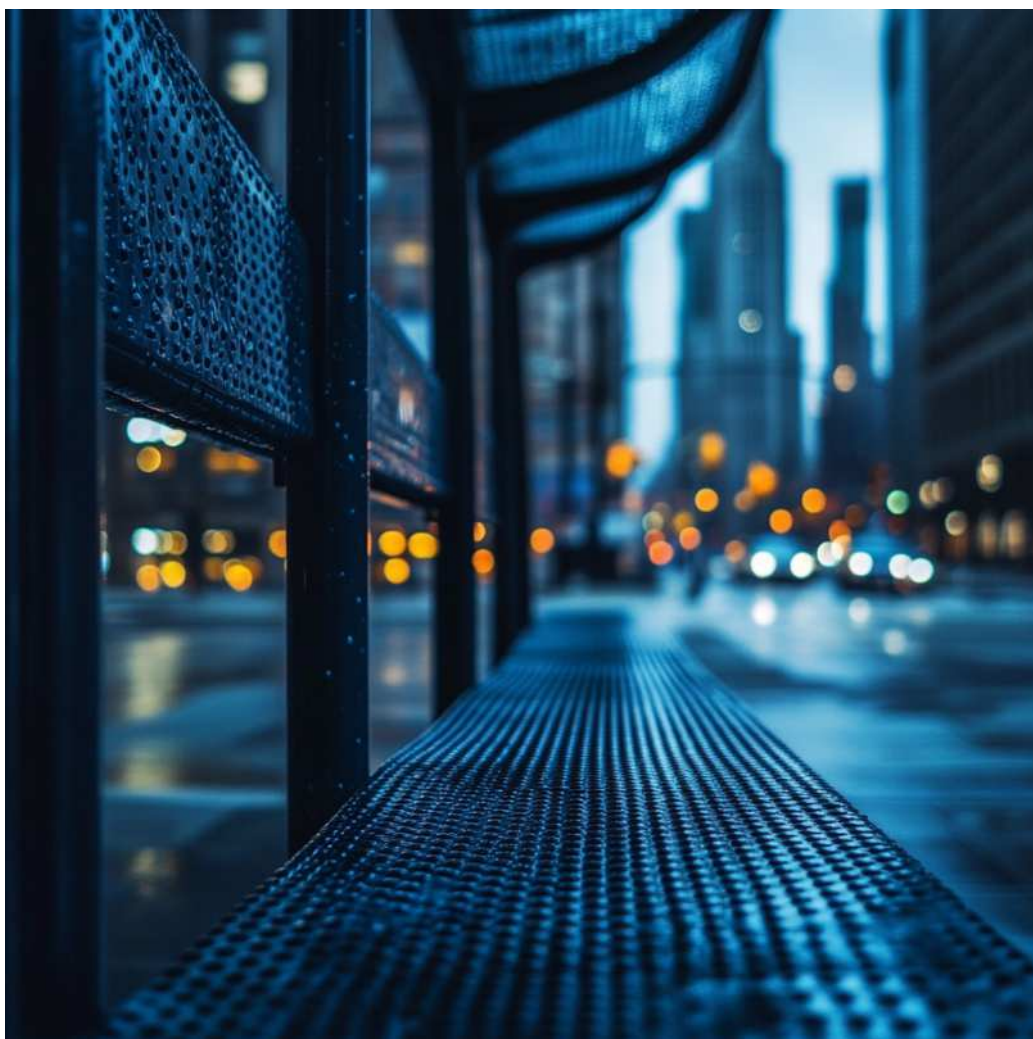


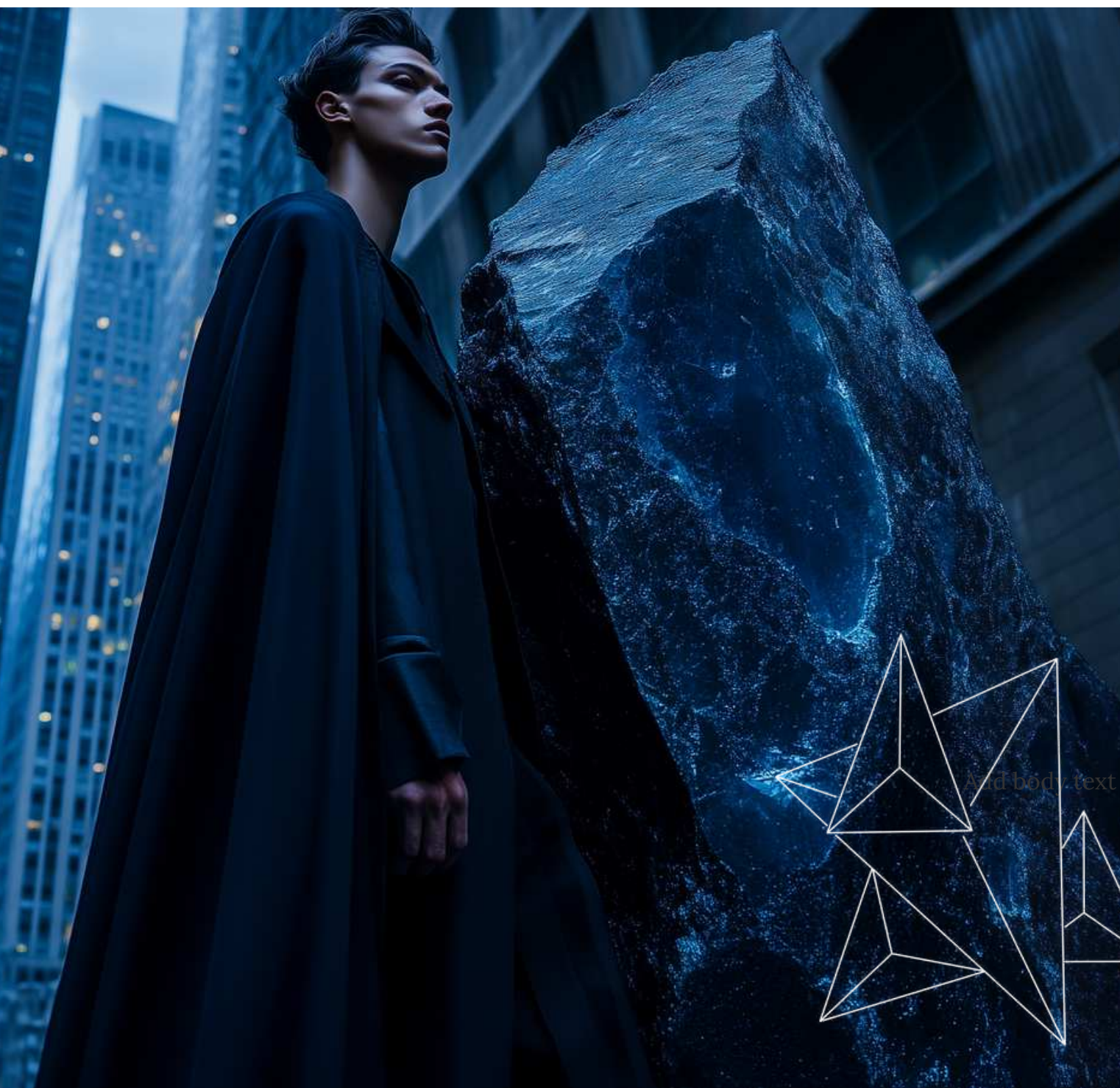
A close-up photograph of a hand holding a large, vibrant blue flower. The background is filled with many other similar blue flowers, creating a dense, textured field of petals. The lighting is soft, highlighting the delicate structure of the petals and the skin of the hand.

Dusk Horizon



Dusk Horizon redefines building structures and outdoor elements, setting them apart from traditional tones with a timeless elegance that conveys openness and lightness. Blue façades create a harmonious connection to nature, subtly integrating structures into their surroundings.





Exclusive Outdoor Design Accents

From benches and lighting fixtures to canopies, the gently shimmering **Dusk Horizon** adds a touch of luxury to urban designs. Simultaneously, the powder coating ensures maximum resistance against scratches, corrosion, and fading, delivering both beauty and enduring performance.





Dusk Horizon

68/40557



Redefining Architecture

When powder coating does more than protect—it inspires—the surface has been enhanced with TIGER Drylac®.

Dusk Horizon is ideal for coating prominent building façades, lending hotels, office complexes, and exclusive residential developments. It makes for an inviting appearance underscored by exceptional durability.

Outdoor Elegance

Its superior weather resistance makes this trend color the perfect choice for exterior applications, including window frames, doors, balconies, and railings. The premium finish combines protection with style, ensuring surface quality and vibrant color brilliance even under challenging conditions.



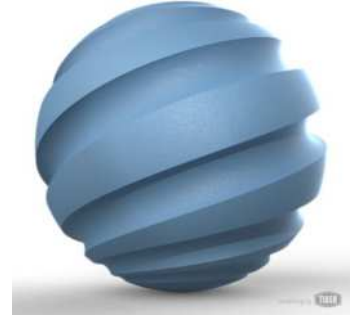
RAL 5001 Green Blue
29/42360



RAL 5009 Azure Blue
29/47310



RAL 5014 Pigeon Blue
68/40105



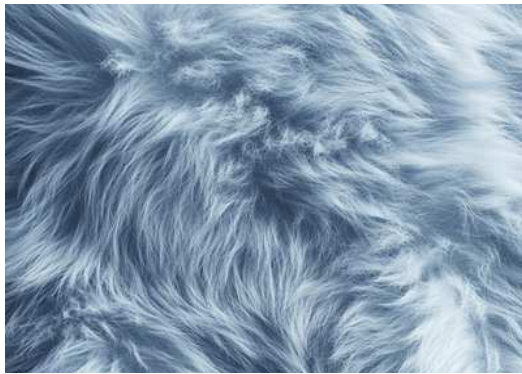
Azzurro 3603
67/40411

A detailed microscopic image of a steel crystal structure, showing sharp, needle-like or plate-like crystals with a complex, interlocking arrangement. The image has a blueish-grey tint and is used as a background for the title.

Arctic Steel

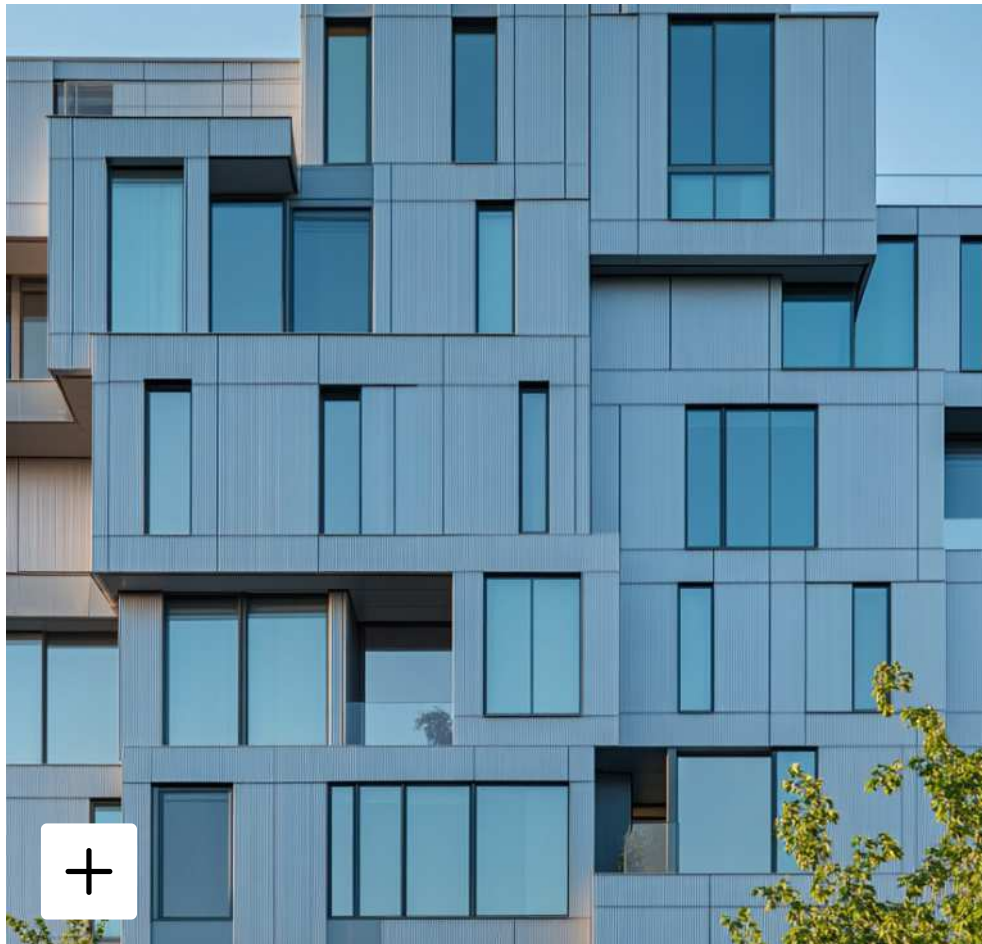


Arctic Steel merges the captivating luminosity of blue quartz with the resilience of advanced powder coating technology. Its bluish-silver tone imparts a metallic shimmer to surfaces, making it a versatile choice for contemporary architectural projects and sophisticated design applications.



Rethinking Façade Art

Where high performance meets cool elegance, **Arctic Steel** becomes the top choice for architects and designers. This finish is ideal for modern construction projects, including commercial and residential buildings. Its elegant color palette aligns with minimalist, timeless aesthetics and pairs beautifully with materials like glass, steel, and concrete.





Striking Elegance

This metallic-finish trend color is perfect for surfaces that need to endure extreme weather while maintaining a stylish and distinctive appearance. **Arctic Steel** resists UV radiation, environmental exposure, and temperature fluctuations, making it an excellent choice for enhancing window frames or façade cladding.





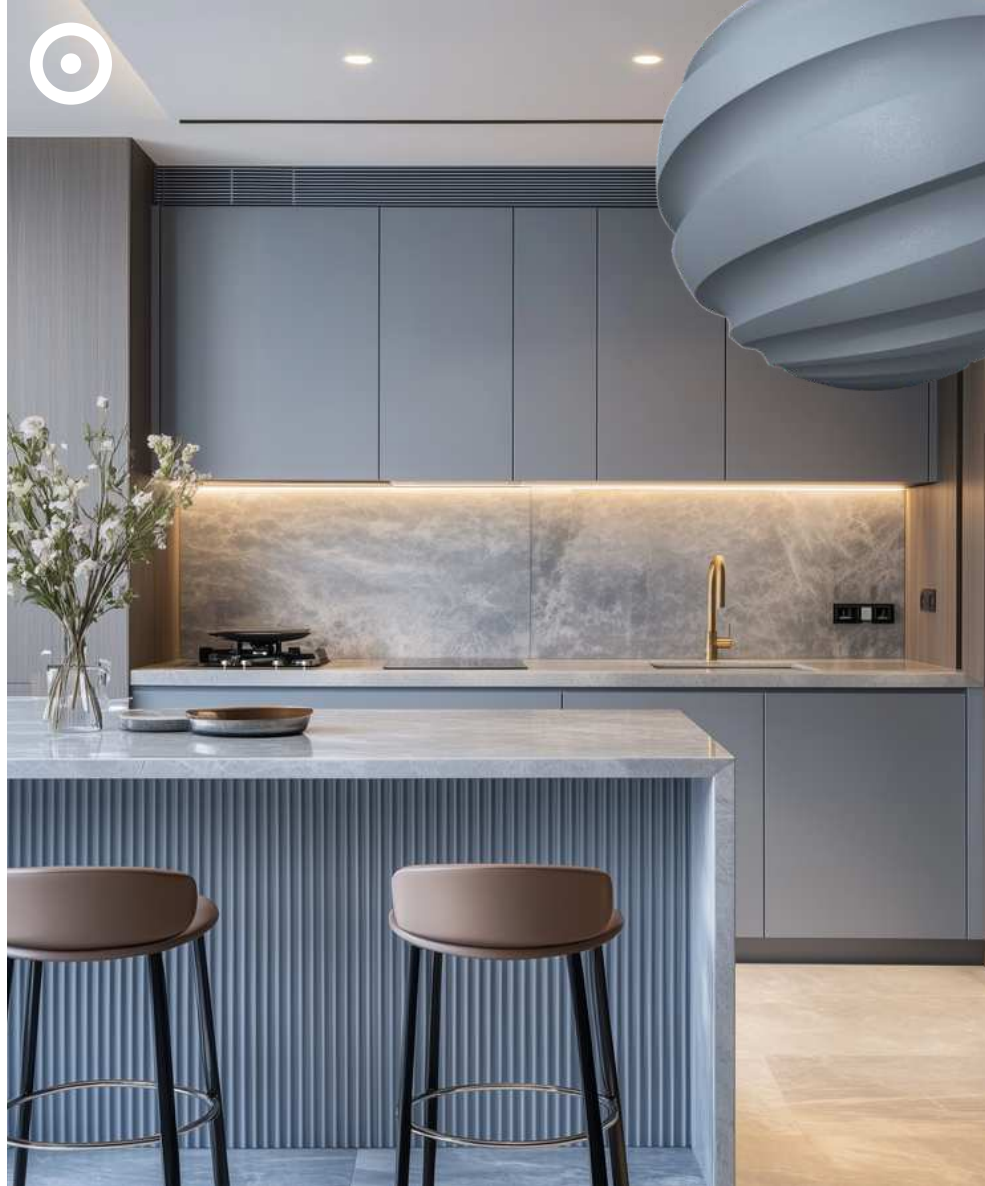
Arctic Steel

67/73032



Robust Industrial Solution

Arctic Steel is more than just a decorative option—it excels in industrial applications, thanks to its chemical and mechanical resistance. Whether on equipment, machinery, or structural components subject to daily stress, this coating ensures long-lasting durability while maintaining a sophisticated appearance.



Argento 3609
67/72233



Grey Classic 109
68/71412



Mica 610
68/71433

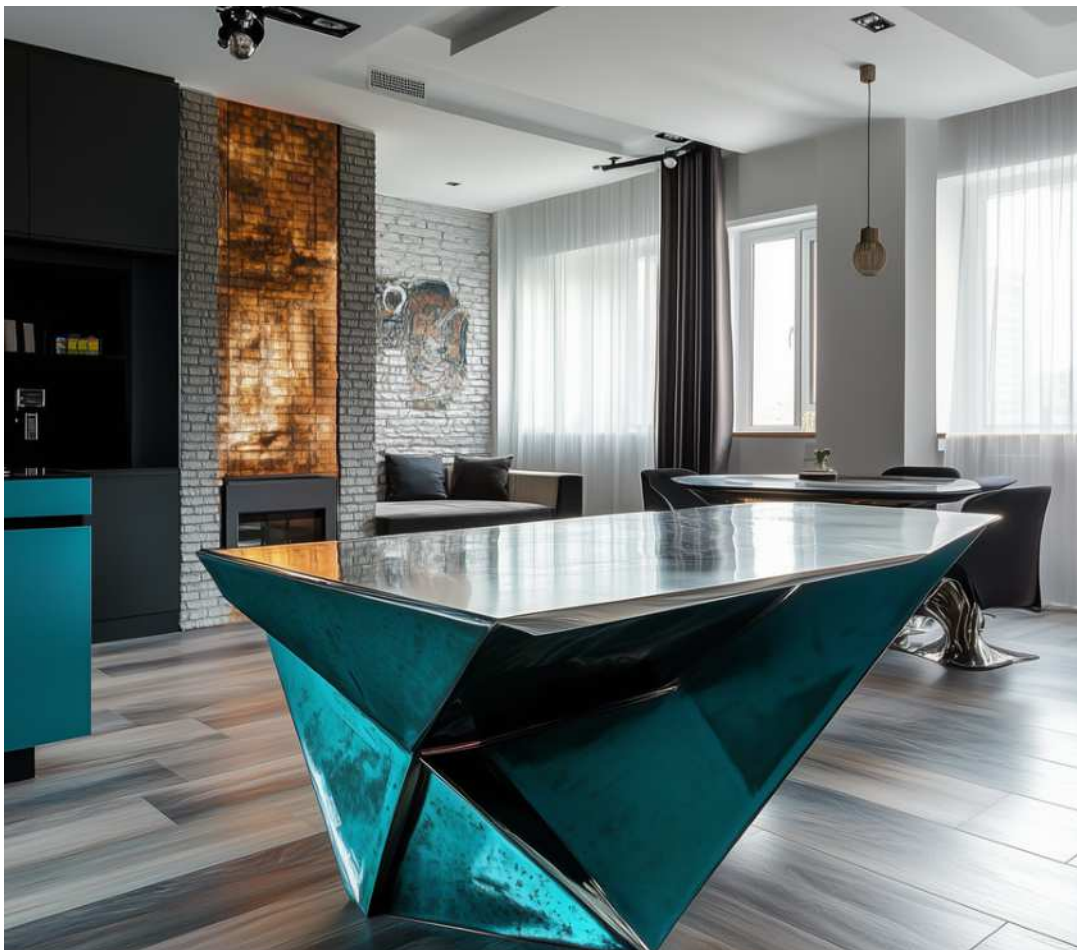
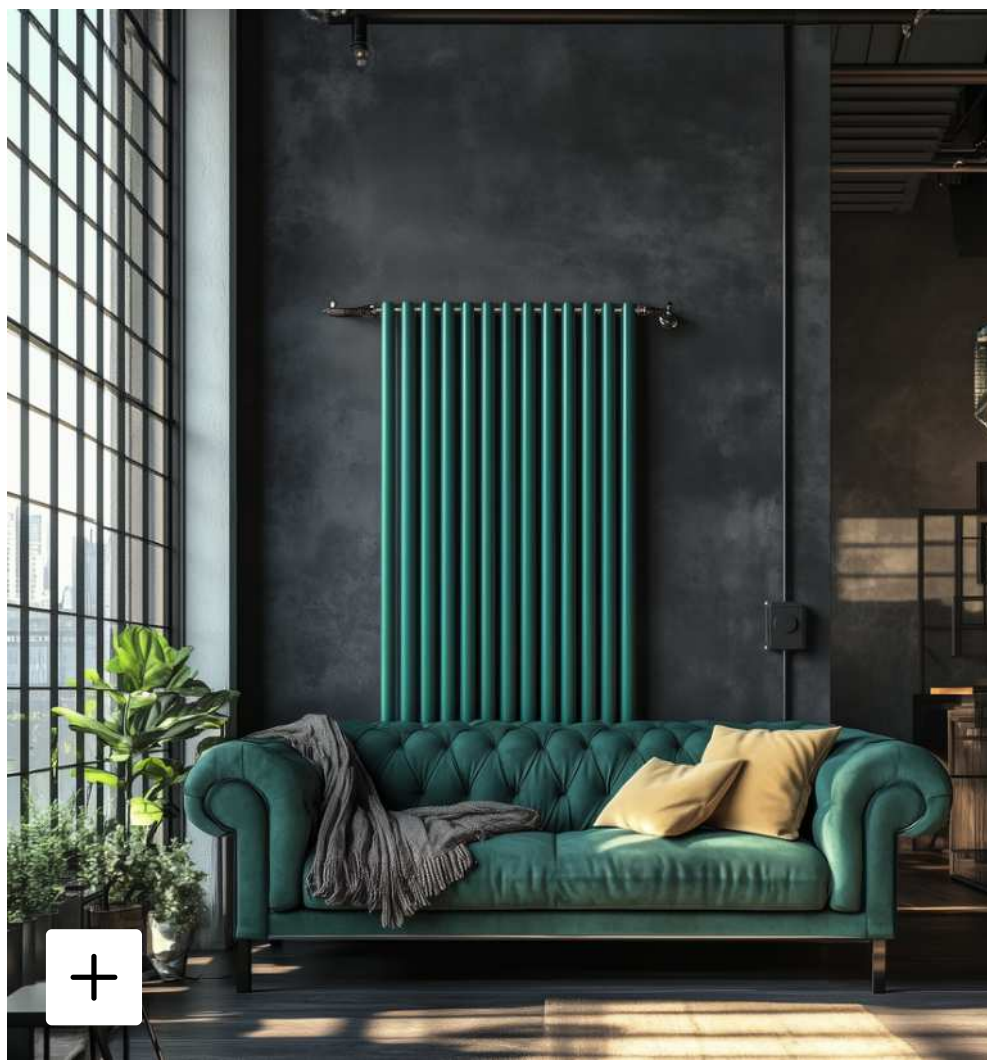


RAL 7015 Slate Grey
68/70143



Aqua Marine





With **Aqua Marine**, you experience a finish that not only impresses visually but also optimally protects your products from external influences. This versatile trend color is ideal for both interior and exterior applications, giving your objects a unique blend of stylish aesthetics and calming elegance.

Aqua Marine

14/40079



Interior Design with a Focus on Work Environments

Whether on furniture, lighting, or kitchen appliances, **Aqua Marine** brings a relaxed atmosphere to living spaces. In work settings, the color tone promotes focus—especially when paired with wood or metal.

Timeless Elegance, Maximum Protection

On garden furniture or outdoor lighting, this weather-resistant finish adds stylish maritime accents. At the same time, it reliably protects surfaces from corrosion, UV radiation, and other environmental factors—an essential advantage for high-quality outdoor products designed to look new for years.

Durability Meets Energy

Aqua Marine shields sports equipment from wear and rust while giving products an energizing effect—perfect for bicycles, fitness studios, and home gyms. The vibrant finish boosts motivation and creates an environment that inspires movement and performance.



RAL 6027 Light Green
14/50077



Highland 3602
67/50396



RAL 6000 Patina Green
29/53970



Sparkling Green
29/50698



Metallic Amber



Metallic Amber is more than just a finish—it's a statement of sophistication and personality. Inspired by the shimmering aura of smoky quartz, this color finds its ultimate expression through powder coating. It merges timeless design with modern functionality, making it the ideal choice for contemporary architectural projects, demanding outdoor applications, and premium product design.





Warmth and Depth for Building Facades

Metallic Amber gives façades a subtle yet striking aesthetic. The earthy tone with a metallic sheen strikes a balance between modern architecture and organic naturality, seamlessly integrating buildings into their surroundings. Its highly weather-resistant formulation ensures the surface retains its beauty for years to come.





Metallic Amber

68/61432



Style Meets Durability

In outdoor spaces that demand both functionality and aesthetic appeal, **Metallic Amber** creates stylish accents that blend seamlessly into diverse outdoor concepts. From patio furniture to railings and fences, this trend color combines robustness with a refined appearance.

Luxury Paired with Individuality

In product design, **Metallic Amber** represents individuality and sophistication. Whether on high-end kitchen appliances, electronic enclosures, or retail installations, this trend color exudes exclusivity. It not only enhances the visual appeal of products but also provides effective protection against scratches and corrosion.



RAL 1001 Beige
29/15690



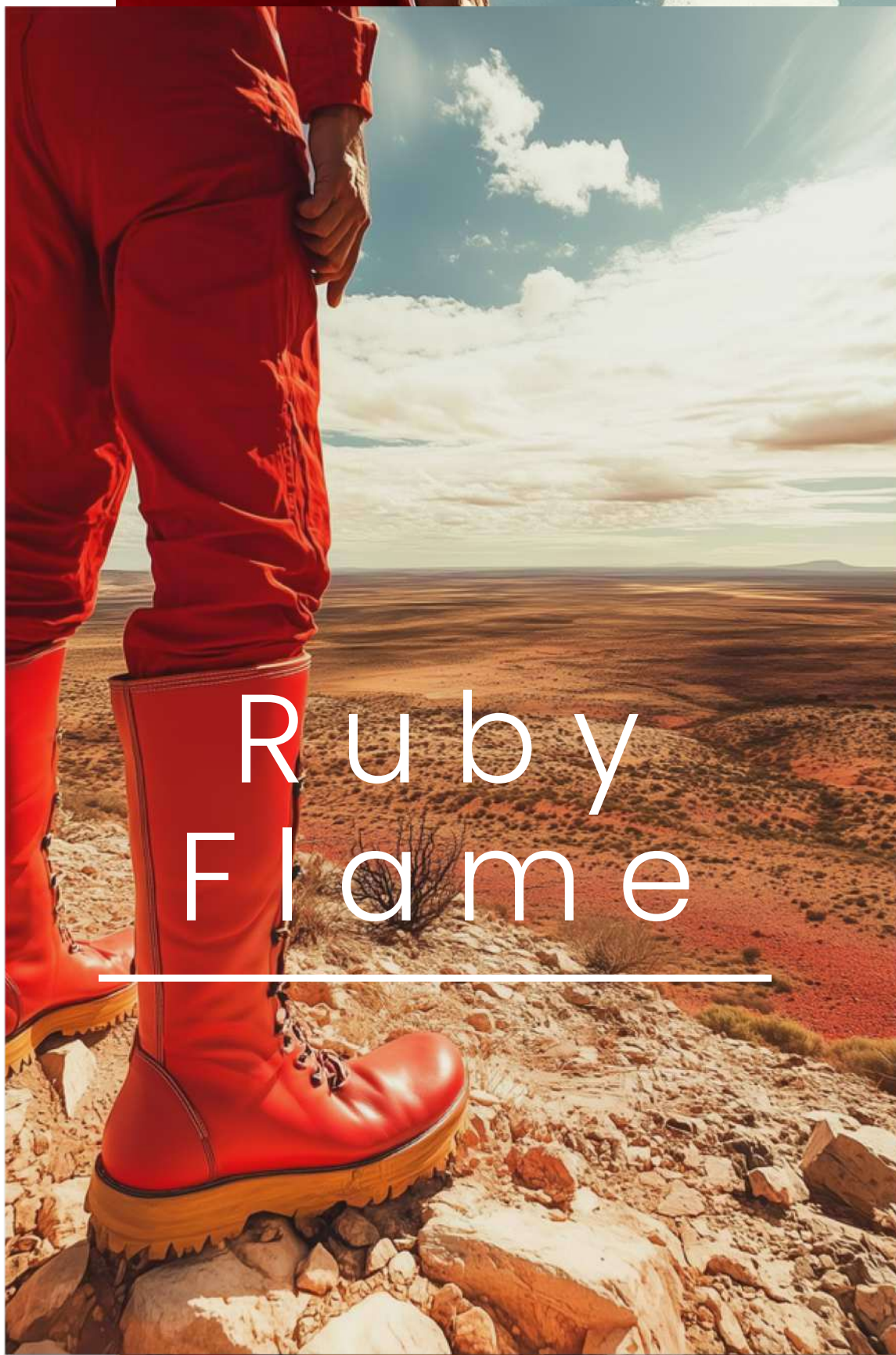
Deore 4602
68/15237



Deore 3601
68/90464



Rusty
67/60116



Ruby Flame



Ruby Flame captivates the luminous allure of a ruby. This vibrant red finish embodies a blend of energy and passion, with a touch of luxury and elegance. It transforms surfaces into focal points and is favored in settings that exude dynamism and exclusivity.

A Statement in Industrial Design

In industrial design, this powerful trend color finds diverse applications. **Ruby Flame** lends a sophisticated touch to technical products like casings and machine enclosures. It pairs seamlessly with cool materials like brushed stainless steel, aluminum, or glass, creating striking contrasts and enhancing its visual impact.



Ruby Flame

29/31455

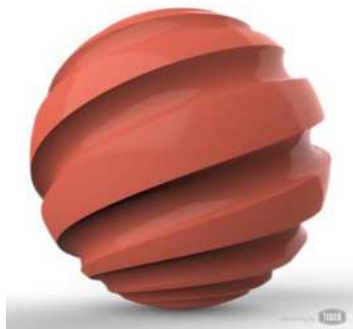


Radiant Accents for the Premium Segment

In interior spaces, **Ruby Flame** adds a luxurious flair to modern living areas. When combined with dark woods such as walnut or mahogany and plush fabrics like velvet, it becomes the centerpiece of any room. This trend color is perfect for accent furniture like coffee tables, chairs, or sideboards, blending avant-garde style with warmth and comfort.

Dynamism and Energy

In the realm of sports and fitness equipment, **Ruby Flame** unleashes its full brilliance. Whether on weight benches, exercise bikes, or treadmill panels, this rich red tone symbolizes energy and passion. Paired with elements like concrete, matte black, or silver, the finish perfectly captures the essence of athletic dynamism.



RAL 3022 Salmon Pink
14/30046



RAL 4002 Red Violet
14/30058



RAL 4004 Claret Violet
29/35019



Rosso 3603
67/30328



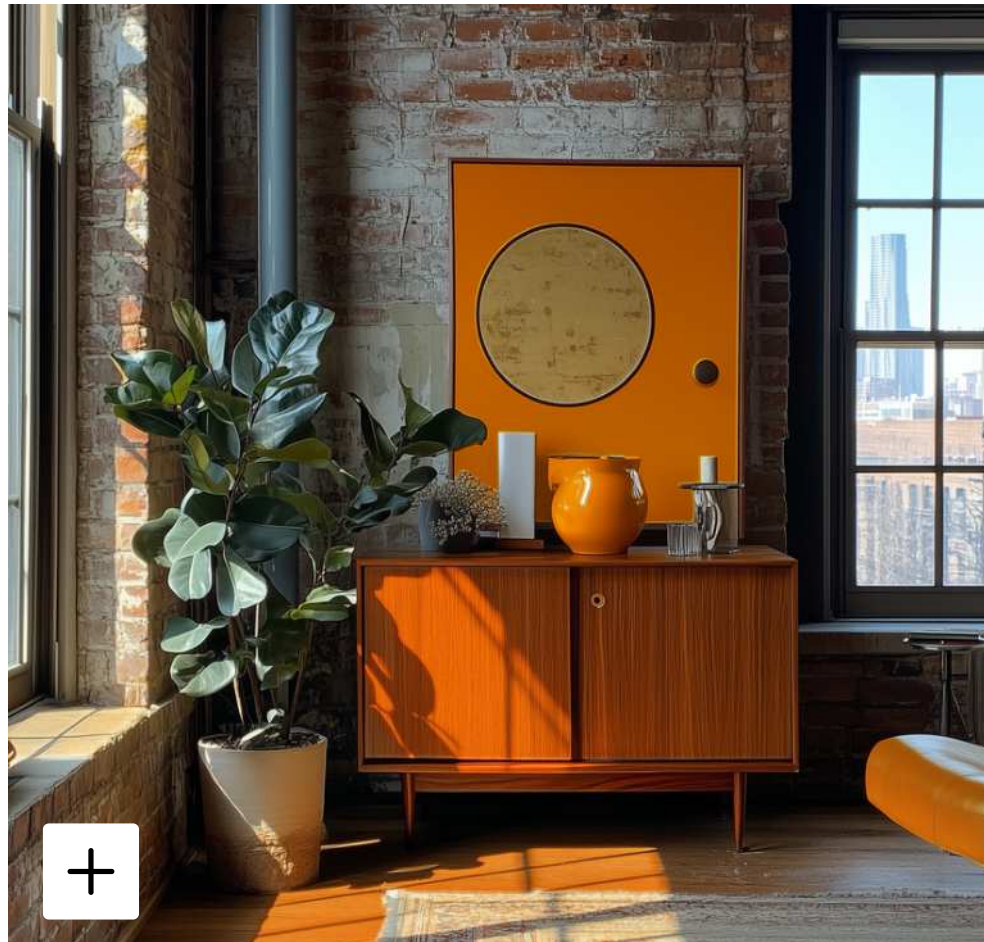
Tangerine
Yellow



Tangerine Yellow brings a fresh vibrancy to the world of powder coating. This sunny trend color combines radiant yellow with a touch of orange, creating dynamic contrasts when paired with materials like aluminum or stainless steel. It is an ideal choice for industrial design, furniture applications, and sports equipment.



Maximum Functionality
In industrial design, **Tangerine Yellow** merges functionality with striking aesthetics. This finish is particularly suited for machine casings, tools, or safety equipment where visibility and dynamic appeal are key.



Tangerine Yellow

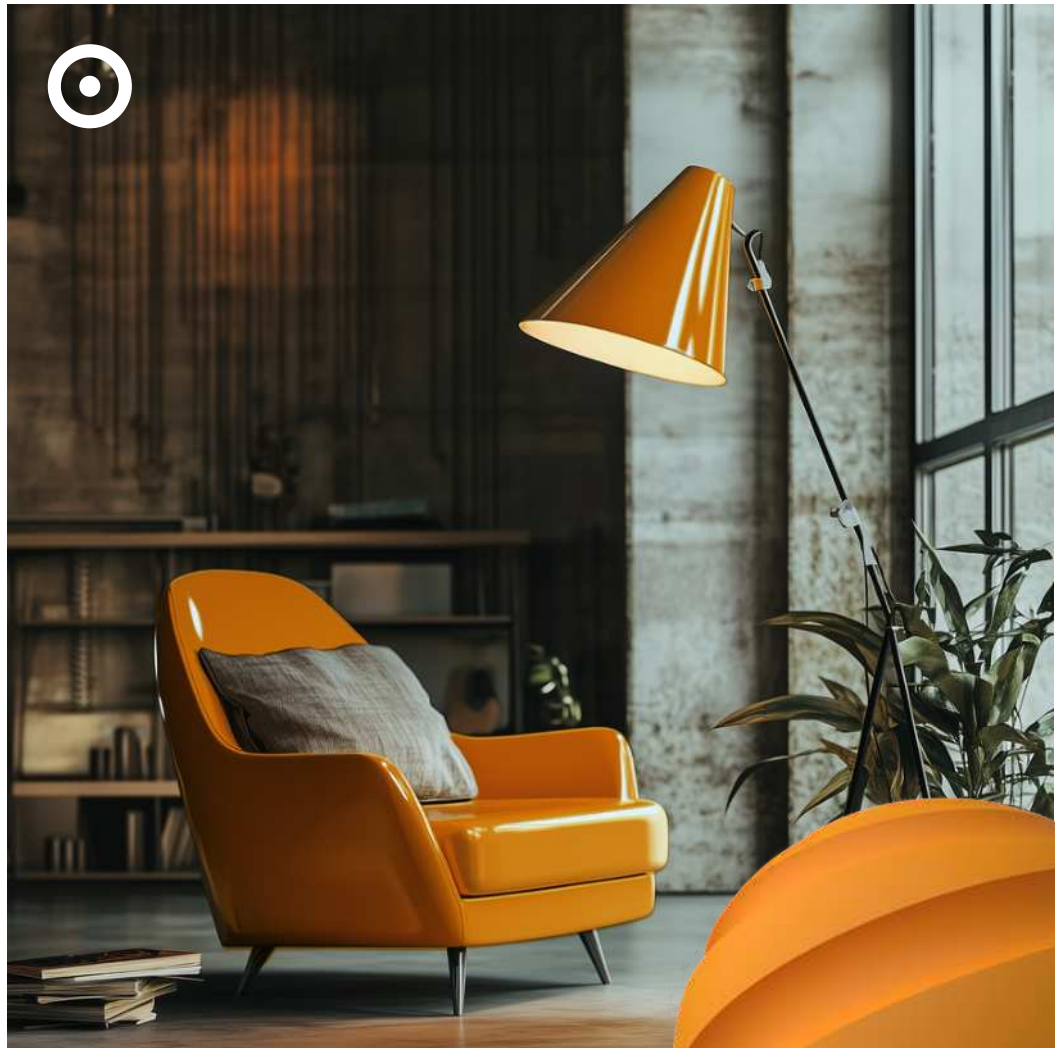
29/22123





Vibrancy in Interior Design

From chairs to side tables and outdoor furniture, **Tangerine Yellow** perfectly highlights furniture pieces, conveying energy and optimism. When combined with materials such as wood, white lacquer, or concrete, the color tone feels both timeless and innovative.



Sport and Style

Tangerine Yellow blends performance with design, appealing to a young and active audience. On sports equipment like bicycles or fitness machines, this weather-resistant finish emphasizes a dynamic character and complements black accents, and glossy surfaces.



RAL 1012 Lemon Yellow
29/22068



Deore 3607
67/20238



Marrone 3602
68/60806



RAL 8024 Beige Brown
14/60068

The living global TIGER network at your service.



Production facilities

Austria | China | Canada | Mexico | U.S.A. | Vietnam

Affiliated companies and distribution

Europe

Austria | Albania | Benelux | Bosnia & Herzegovina | Bulgaria | Croatia | Cyprus | Czech Republic
Estonia | France | Germany | Great Britain | Greece | Hungary | Italy | Latvia | Lithuania | Macedonia
Poland | Portugal | Romania | Serbia | Slovakia | Slovenia | Spain | Switzerland | Türkiye | Ukraine

North America

Canada | Mexico | U.S.A.

Asia

China | Japan | Taiwan | Vietnam

Africa

Egypt

   www.tiger-coatings.com

