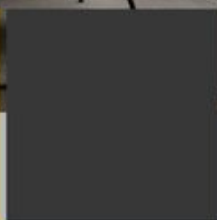
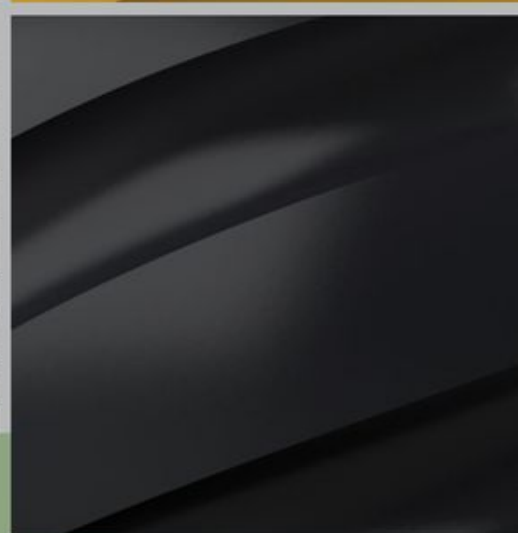
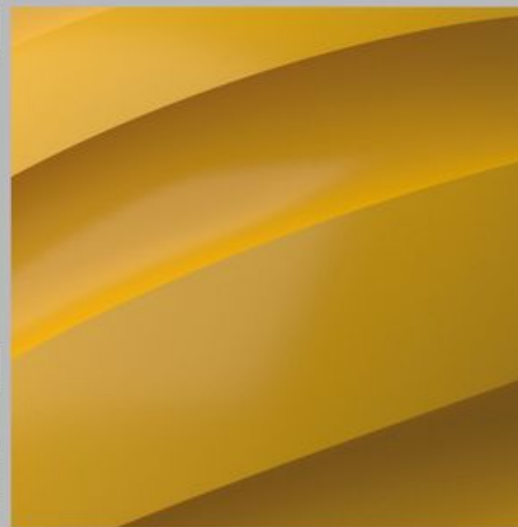




Drylac®  
Powder Coatings



## Facade & Architectural Design

Durable Powder Coating

QUALICOAT Class 1 | GSB Florida 1

SMOOTH MATTE  
**FlexCURE18** Series

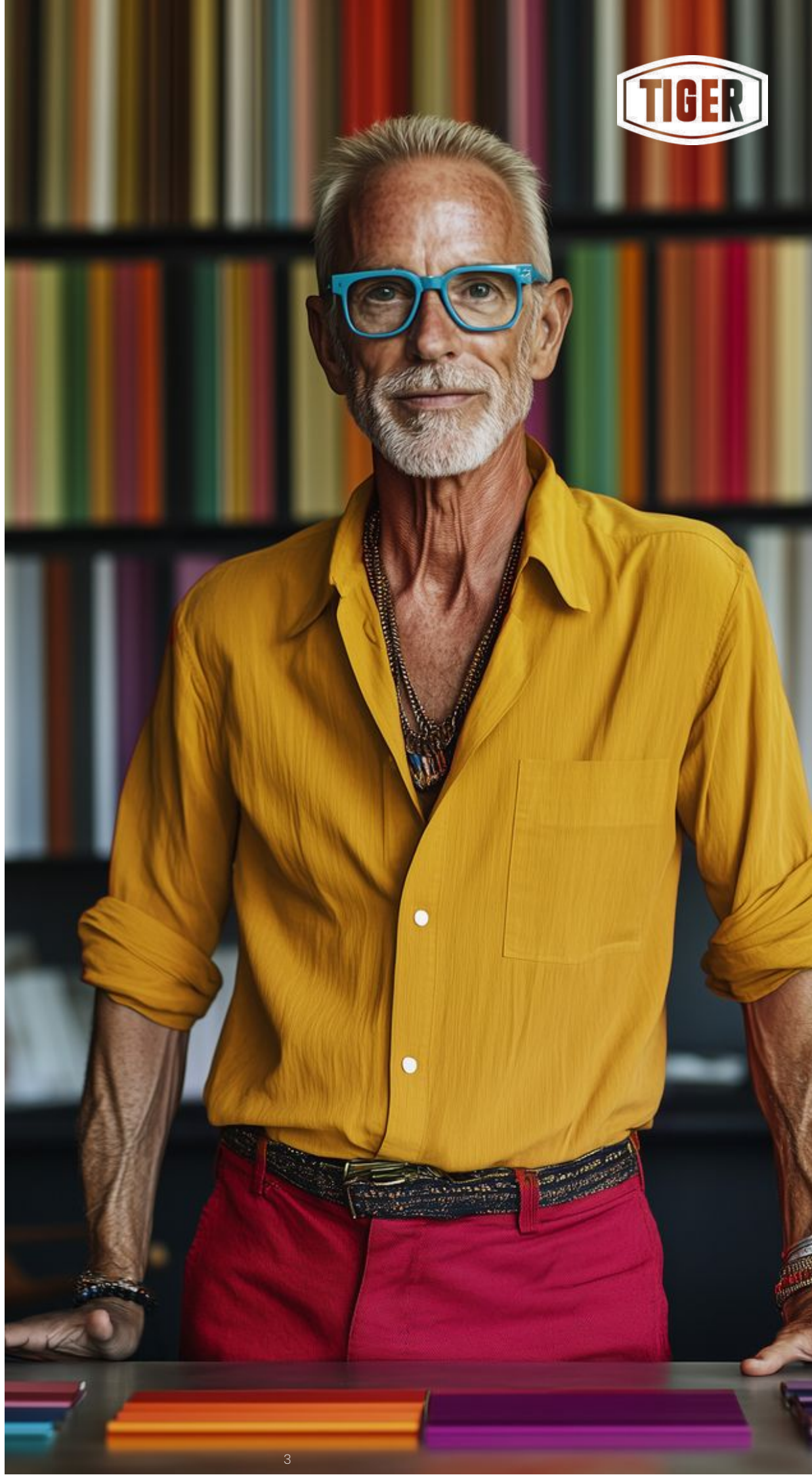


Experience Powder Coating in a  
new light – an interplay in harmony  
of function, color and freedom for  
your creative vision.

**DESIGN FREEDOM IN ITS MOST  
COLORFUL FORM.**

# FlexCURE 18

FLEXIBILITY IS OUR PROMISE!





DISCOVER MORE!  
Durable  
Powder Coating Finishes  
in smooth matte

# TIGER Drylac® FlexCURE 18

WEBSHOP



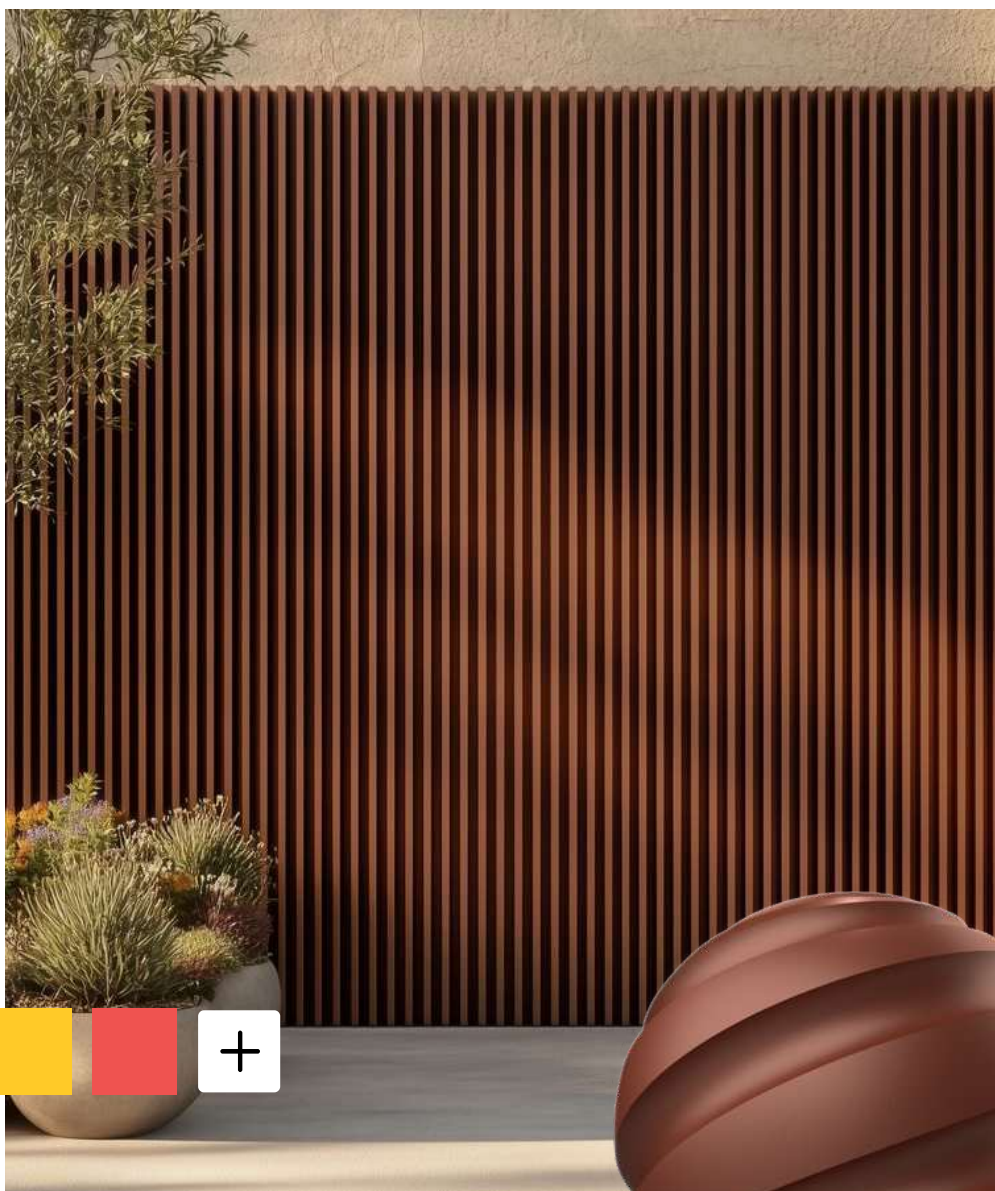
The future  
of the coating technology



## Design freedom in its most colorful form

With TIGER Drylac® *FlexCURE* Series 18, you can bring your unique design vision to life.

*FlexCURE* Series 18 Series 18 sets a new benchmark in powder coating technology. This innovative product line offers outstanding performance, environmental responsibility, and—most notably—a **flexible curing window** that opens new doors in processing and application.



approx. RAL 8029 Pearl Copper  
18/64064







## Why *FlexCURE*?

TIGER's *FlexCURE* technology delivers exceptional flexibility and impressive energy efficiency.

TIGER Drylac® Series 18 *FlexCURE* has been rigorously tested and meets the high quality standards of the established Series 29.

### Key Benefits at a glance

#### Energy Savings:

Cures at lower temperatures, reducing energy consumption and CO<sub>2</sub> emissions.

#### Increased Productivity:

Faster curing cycles improve your production efficiency.

#### Maximum Flexibility:

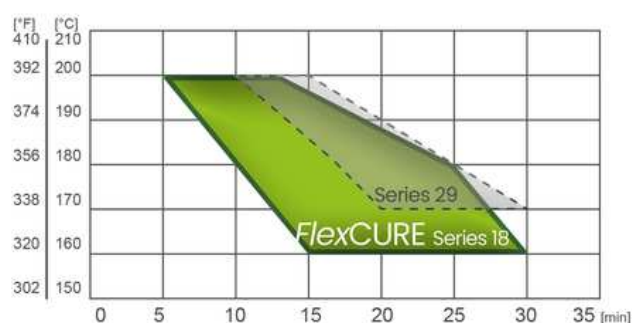
Different components and material thicknesses can be coated at the same oven settings.

#### Seamless Product Changeovers:

No need to adjust oven temperatures when switching between standard and *FlexCURE* powders.

The core of Series 18 is its expanded curing window from 320 °F to 392 °F (160 °C to 200 °C).

This remarkable range allows for stable, efficient processing—even with components of varying thickness. Overlapping curing conditions with standard-cure Series 29 eliminate the need for time-consuming oven adjustments, saving time, energy, and significantly increasing process reliability.



substrate temp.	min. curing time	max. curing time
200 °C	5 minutes	13 minutes
180 °C	10 minutes	25 minutes
160 °C	15 minutes	30 minutes

TIGER Drylac®  
**FlexCURE 18**



RAL 1032 Broom Yellow  
18/20730





## Color. Finish. Freedom.

Whether for façades, steel structures, sunrooms, or fencing systems—perfect surfaces form the foundation of bold, impactful design.

TIGER Coatings' advanced powder coating solutions offer design freedom in its most colorful form: durable, functional, and custom-tailored. For architectural applications that deliver—both technically and aesthetically.





# The future of the coating technology



RAL 3009 Oxide Red  
18/31392





## A diverse range of matte colors

Design freedom in its most colorful form—*FlexCURE* Series 18 allows you to create surfaces exactly the way you envision.

Currently available in a matte finish, it aligns perfectly with contemporary architectural trends favoring elegant, timeless looks.

### A Broad Color Spectrum

From classic to cutting-edge hues—Series 18 offers a wide range of shades.

### Color accuracy

diverse color and effect options in a consistent look



### Aesthetic & Elegance

Matte finishes add a premium, sophisticated appeal to any project.



RAL 5001 Green Blue  
18/42360



approx. RAL 9006 White Aluminium  
18/90208



RAL 6021 Pale Green  
18/63690



RAL 6003 Olive Green  
18/50103

EXPLORE MORE  
PRODUCTS IN  
OUR WEBSHOP







RAL 6002 Leaf Green  
18/50420



"Colors are not qualities of things themselves, but effects produced in us."

- Immanuel Kant,  
Critique of Pure Reason (1781)





TIGER Drylac®  
**FlexCURE 18**



RAL 9005 Jet Black  
18/80430







# Versatile Applications

*FlexCURE* Series 18 is specially formulated for use on metal façades, profiles, doors, gates, windows, fences, and winter gardens.

## Architecture

Ideal for high-demand projects where aesthetics and durability are key.

## Industry

Offers excellent resistance to weathering and mechanical stress—suitable for a variety of industrial uses.

## Sustainability

Energy-efficient curing supports environmentally conscious building practices.

## Conclusion

TIGER Drylac® *FlexCURE* Series 18 merges technological innovation with sustainability and creative freedom. It provides architects and designers the flexibility they need to realize their creative visions—without compromising on quality or environmental standards.



C33  
18/65680



approx. RAL 1035 Pearl Beige  
18/90010



RAL 7016 Anthracite Grey  
18/73570



RAL 9010 Pure White  
18/10470

EXPLORE MORE  
PRODUCTS IN  
OUR WEBSHOP





# Product FAQ's

## Can I still use the existing curing settings with *FlexCURE* technology in general?

Yes, you have full flexibility within the curing window to decide which settings to use in your production. TIGER has carefully considered customer needs and designed the new curing window to overlap significantly with the previous one. By way of illustration, if you have been curing your parts at 200°C for 10 minutes and prefer not to change this setting, you can continue to do so.

## How does the *FlexCURE* technology differ from previous product series? What has changed?

For the *FlexCURE* technology, synthetic resins have been further developed or newly formulated. This allows the curing window to be extended to temperatures ranging from 160 to 200 °C, offering maximum flexibility in selecting curing conditions.

Both the visual and functional properties, as well as the weathering resistance of the products, meet the standards of relevant quality associations.

## Can color consistency with previous series be ensured?

The colors of the *FlexCURE* Series are matched to the existing TIGER Drylac® Series. Therefore, usual batch-to-batch variations can be expected.

## Are there visual differences in *FlexCURE* products at different curing temperatures?

Yes, as before, there are the usual variations in color and gloss within the curing window.

## Are the existing TIGER Drylac® and the new *FlexCURE* products compatible with each other?

Laboratory tests have shown that the new *FlexCURE* Series 18 matte is technically compatible with the previous Series 29 matte. Mixing the two does not result in incompatibility.

However, line specific factors may lead to different results. Therefore, we recommend cleaning the system when switching products, just as with any color change.

## Can incompatibilities occur when *FlexCURE* products and powder coatings from other manufacturers are processed and cured in succession?

The compatibility with other powder coatings from different manufacturers remains unchanged with this transition. However, it is important to continue the usual cleaning procedures for the line equipment.

## Are there already architectural approvals for *FlexCURE*?

Yes, *FlexCURE* Series 18 matte is certified with GSB Florida 1 (174 q) and QUALICOAT Class 1 (P-1977).

## Is there an EPD certificate (Environmental Product Declaration) for *FlexCURE*?

The EPD certificate for *FlexCURE* Series 18 can be found here.



CERTIFICATES







### **When will the first switch to *FlexCURE* Series 18 matte take place?**

Starting June 26, 2025, *FlexCURE* Series 18 smooth matte will replace the previous Series 29 smooth matt product line.

### **What will the transition process look like and will the previous TIGER Drylac® series be discontinued at some point?**

As a first step, starting June 26, 2025, 30 selected products from the current Series 29 matte will also be available from stock in *FlexCURE* Series 18 matte. All other standard RAL colors and metallic effects from Series 29 matte will follow gradually as part of a controlled phase-out/phase-in process.

### **How do I place orders going forward?**

Series 29 matte will only be available while supplies last and will be replaced by Series 18 matte with each new production. When you place an order, we will inform you accordingly and automatically supply the new *FlexCURE* Series 18 matte variant. In addition, we provide a landing page where we continuously update which products are already available in Series 18 matte. We recommend bookmarking this landing page to ensure you order the appropriate Series 18 matte product for new purchases and to avoid order corrections. If needed and upon request, products from Series 29 matte can still be ordered as custom-made items.

### **Will new product numbers be assigned to the *FlexCURE* products?**

The 5-digit product number after the series designation will (with few exceptions) remain unchanged; only the series number will change. For example: RAL 7016 matte 29/73570 becomes RAL 7016 matte 18/73570. The overview provides all product numbers for the entire Series 18 matte *FlexCURE*, enabling you to update the material master data in your ERP system accordingly.

PRODUCT  
OVERVIEW

### **How are ongoing construction projects handled during the transition phase to *FlexCURE*?**

Construction projects are often coated over extended periods and may even require follow-up coatings at a later point in time. During the transition phase, we cannot guarantee the availability of specific series and batches at a later time. Therefore, we recommend coating projects directly with *FlexCURE* with unchanged curing settings whenever possible. If necessary, the previously used TIGER Drylac® product can still be obtained as a custom order product. The processing guidelines and the recommendation to use the same batch for a project whenever possible remain unchanged with *FlexCURE*.



# Technical information

TIGER Drylac® Series 18  
powder coating for metal  
facades and steel  
construction

Base: Polyester

## Typical application

- metal facades and profiles
- doors, gates, window frames, fences
- winter garden
- steel construction

## Product details

### Standard Packaging:

In original boxes of 20 kg each as well as in Minipacks of 2.5 kg each

### Specific Gravity (ISO 8130-2):

1.2-1.7 g/cm<sup>3</sup> depending on pigmentation

### Theoretical Coverage:

at 60 µm film thickness: 9.8-13.8 m<sup>2</sup>/kg depending on specific gravity (please see also Information Sheet no. 1072 - latest edition)

### Lagerfähigkeit:

Use before: see printed date on product label; under dry conditions at no more than 25 °C, avoid direct and extended heat exposure

(The shelf life of custom made blanket orders or other stock agreements which by their nature are stored over longer periods is determined by the original production date.)

## Features

- highly weather resistant
- very good flow properties
- very good mechanical properties
- good storage stability
- batch consistency of RAL colors acc. to VdL guidance no. 10



## Finish

Smooth matte gloss level 20 – 35\*

\* Gloss level acc. to ISO 2813/60° angle (doesn't apply to metallic effect powder coatings). The measured gloss level of effect powder coatings can diverge from the details given in this product datasheet. The creation of tolerance samples is urgently recommended)

## Pre-treatments

The following table reflects the common methods of pretreatment with regards to various substrates and applications. In selecting the proper type of pretreatment please observe the suitability of the type of powder coating for a desired application according to the guidelines of this Product Data Sheet.

	Alu- minum			Steel			Galvanized Steel		
<sup>1) 2)</sup> Chromating	○	○	○				○	○	○
<sup>2)</sup> Pre-Anodizing	○	○	○						
<sup>2)</sup> Chrome free	○	○	○				○	○	○
Iron Phosphating				○					
Zinc Phosphating				○	○		○	○	○
Blasting				○	○				
<sup>3)</sup> Sweeping							○	○	○
Degreasing	○			○			○		
	I	E	A	I	E <sup>4)</sup>	A <sup>5)</sup>	I	E	A <sup>5)</sup>

Application: I = interior; E = exterior; A = architectural

<sup>1)</sup> acc. to DIN 12487

<sup>2)</sup> acc. to GSB and QUALICOAT quality and test regulations.

<sup>3)</sup> only for zinc coated parts > 45 µm

<sup>4)</sup> for a two-coat process TIGER Series 270 / 271 / 272 / 273

<sup>5)</sup> for a two-coat process acc. to GSB TIGER Series 270 / 271



## Application | Processing

Standard stock item: Corona only  
Custom order product: Corona, Tribo on request

## Material approvals for colors and metallic effects\*

Quality labels for the piecework coating of building components



### Smooth matte

GSB Florida 1 - 174q  
QUALICOAT Class 1 - P-1977



### Fire rating

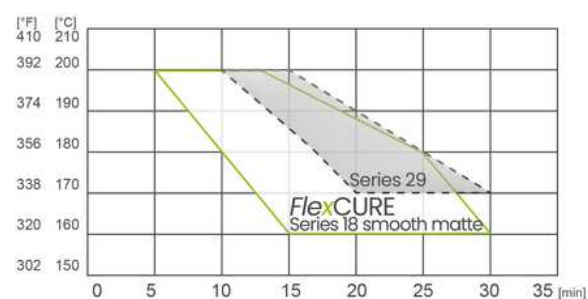
acc. to EN 13501-1:2018 with result A2-s1, d0\*\*

\* exemptions prevail

\*\* substrate: aluminium; max. film thickness: 115 µm

## Cure parameters

smooth *matte*



substrate temp.	min. curing time	max. curing time
200 °C	5 minutes	13 minutes
180 °C	10 minutes	25 minutes
160 °C	15 minutes	30 minutes

Please observe cure parameters closely since mechanical properties will develop before full cross-linking!





# Technical information

TIGER Drylac® Series 18  
powder coating for metal  
facades and steel  
construction

Base: Polyester

## Test results

Checked under laboratory conditions on a pretreated aluminum test panel which is 0.7 mm thick. Actual product performance may vary due to product specific properties such as gloss, color, effect and finish as well as application related and environmental influences.



## Processing instructions

The guidelines for application (**datasheet 1213**) must be strictly observed. The Product Data Sheets, Technical Information Sheets and the guidelines for application each in their latest version, are available for download on [www.tiger-coatings.com](http://www.tiger-coatings.com).

test method      test      Series 18 smooth matte

ISO 2360	<b>film thickness recommended</b>	60-80 µm
ISO 2813	<b>gloss - 60°</b>	matte 20-35
ISO 2409	<b>cross cut test/adhesion</b> 1 mm cutting distance	0
ISO 1519	<b>mandrel bending test</b> cracking of coating	≤ 5 mm not permitted
ISO 2815	<b>impression hardness</b>	≥ 80
ISO 1520	<b>cupping test</b> cracking of coating	≥ 5 mm not permitted
ASTM D 2794	<b>ball impact test</b> cracking of coating	20 Inch/pound not permitted
ISO 6270-1	<b>determination of resistance to humidity</b> 1000 h	delamination around scribe max. 1 mm
ISO 9227	<b>salt spray test</b> 1000 h	delamination around scribe max. 1 mm
acc. to EN ISO 16474-3	<b>accelerated weathering</b> UV-B (313 nm) 300 h *	residual gloss ≥ 50 %
EN ISO 16474-2	<b>accelerated weathering test</b> xenon-arc radiation 1000 h **	residual gloss ≥ 50 %
EN ISO 2810	<b>natural weathering</b> in Florida 12 month	residual gloss ≥ 50 %

\* acc. to GSB AL 631 ([www.gsb-international.de](http://www.gsb-international.de)) \*\* acc. to QUALICOAT specifications ([www.qualicoat.net](http://www.qualicoat.net))



## Disclaimer

Our verbal and written recommendations for the use of our products are based upon experience and in accordance with present technological standards. These are given in order to support the buyer or user. They are non-committal and do not create any additional commitments to the purchase agreement. They do not release the buyer from verifying the suitability of our products for the intended application. We warrant that our products are free of flaws and defects to the extent as stipulated in our Terms of Delivery and Payment. As a part of our product information program each of our Product Data Sheets are periodically updated, so that the latest version shall prevail. Therefore, please visit the download area of [www.tiger-coatings.com](http://www.tiger-coatings.com) to make sure you have the most current version of this Product Data Sheet. The information in our Product Data Sheets is subject to change without notification.



This Product Data Sheet substitutes any and all previous Product Data Sheets and notes for customers published on this subject matter and is only intended to give a general product overview. Please request specific information for products outside of our standard product list (latest version).

The Technical Information Sheets and the Terms of Delivery and Payment each in their latest version, are available for download on [www.tiger-coatings.com](http://www.tiger-coatings.com), form an integral part of this Product Data Sheet.

TIGER Coatings GmbH & Co. KG  
certified according to  
EN ISO 9001 / 14001  
IATF 16949



# The living global TIGER network at your service.



## Production facilities

Austria | China | Canada | Mexico | U.S.A. | Vietnam

## Affiliated companies and distribution

### Europe

Austria | Albania | Benelux | Bosnia & Herzegovina | Bulgaria | Croatia | Cyprus | Czech Republic  
Estonia | France | Germany | Great Britain | Greece | Hungary | Italy | Latvia | Lithuania | Macedonia  
Poland | Portugal | Romania | Serbia | Slovakia | Slovenia | Spain | Switzerland | Türkiye | Ukraine

### North America

Canada | Mexico | U.S.A.

### Asia

China | Japan | Taiwan | Vietnam

### Africa

Egypt



[www.tiger-coatings.com](http://www.tiger-coatings.com)

